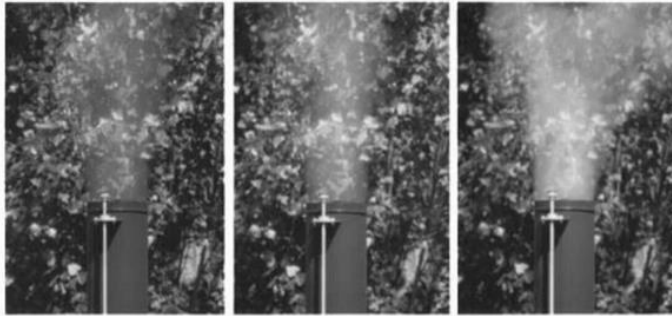


# Who shot J.R.'s chimney?

(it was a dark and stormy night, & the near neighbor (N.N.) needed a PM2.5 monitor, but didn't yet have one. Anyway, the wood stove was "certified" & N.N. had a camera)

**RAWSEP's Episode 56JR: A near neighbor in Washington State arranged a photo shoot, as suggested by the Department of Ecology**

Can you tell the different opacities apart (with glasses? with cataracts? 19%? 21%?) Should the near neighbor act like a canary in a coalmine & just drop dead?

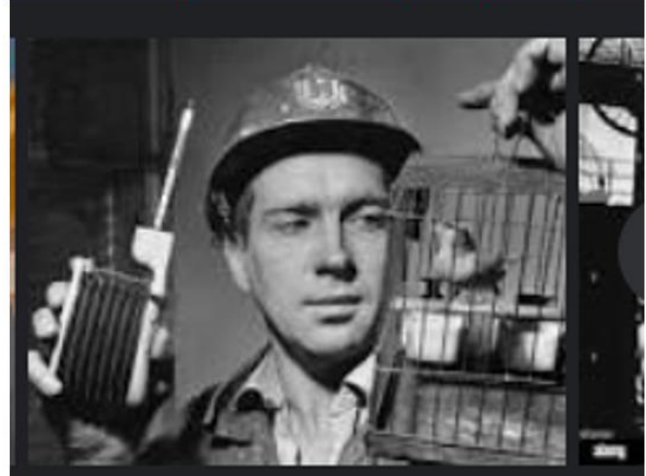


20% - Legal

40% - Illegal

80% - Outrageous!

How much smoke is legal?



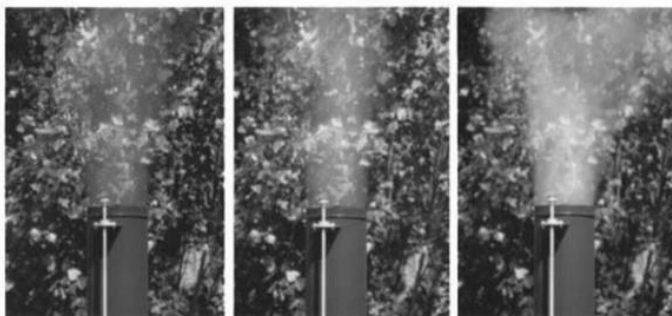
In Washington it's illegal to have smoke billowing at more than 20% opacity for more than six minutes in an hour. *Washington State Department of Ecology*

# Who shot J.R.'s chimney?

(it was a dark and stormy night, & the near neighbor (N.N.) needed a PM2.5 monitor, but didn't yet have one. Anyway, the wood stove was "certified" & N.N. had a camera)

**RAWSEP's Episode 56JR: A near neighbor in Washington State arranged a photo shoot, as suggested by the Department of Ecology**

Can you tell the different opacities apart (with glasses? with cataracts? 19%? 21%?) Should the near neighbor act like a canary in a coalmine & just drop dead?

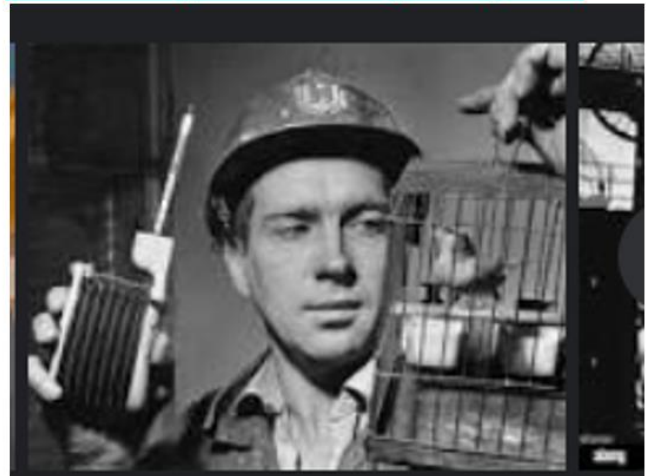


20% - Legal

40% - Illegal

80% - Outrageous!

How much smoke is legal?



In Washington it's illegal to have smoke billowing at more than 20% opacity for more than six minutes in an hour. *Washington State Department of Ecology*

Who shot J.R.'s chimney? It was a dark & stormy night & the near neighbor (N.N.) needed a PM2.5 monitor but didn't yet have one. Anyway, the wood stove was "certified" & N.N. had a camera. RAWSEP's Episode 56JR: A near neighbor in Washington State arranged a photo shoot, as suggested by the Department of Ecology. Can you tell the different opacities apart (with glasses? with cataracts? 19%? 21%?) Should the near neighbor act like a canary in a coalmine & just drop dead? See Residents Against Wood Smoke Emission Particulates Corporation, <https://rawsepresidents.wordpress.com> for news articles on Indoor Residential Wood burning smoke pollution & remedies. See RAWSEP Youtube videos at <https://www.youtube.com/@rawsepresidents4370> & RAWSEP podcasts on Spotify <https://open.spotify.com/show/32hfC477jEeeDbQoTsu82l> & Amazon Music Prime & <https://podcasts.google.com>, & more. Residents Against Wood Smoke Emission Particulates Corporation, a non-profit organization is writing a grant distributing PM2.5 monitors to any near neighbor who complains of wood smoke pollution (PM2.5) entering the near neighbor's yard, as well as distributing Heat Pumps that work at 40 degrees below zero Fahrenheit. The PM2.5 monitors are a superior method of detecting air pollution, compared to shooting photos of smoke opacity or relying on the EPA certification of wood stoves as "safe". The Office of the Inspector General (OIG), watchdog of the Environmental Protection Agency (EPA) stated in a report in February 2023 that the EPA certification of wood stoves was deeply "flawed" & many if not most wood stoves certified do not actually meet the standards of certification, emissions of 2 grams of PM2.5 per hour. Attorney Generals from 10 States are currently suing the EPA in order to have wood stove certification improved in 2023, but the EPA has indicated no changes may happen until 2027. Wood smoke is 90% PM2.5, particulates of 2.5 micrometer size, which are the perfect size to infiltrate the human lung, setting off a cascade of human health problems & early deaths. Wood burning emits more PM2.5 & CO2 than coal burning, even in properly certified US wood burning stoves & United Kingdom Ecodesign wood burning stoves. Wood burning emits 450 times the PM2.5 as a natural gas furnace. \$249 PurpleAir PM2.5 monitors are on US EPA AirNow Maps of smoke & Fire, alongside \$100,000 EPA PM2.5 monitors, correlated to EPA monitors with a simple mathematical formula. These monitor readings told millions of Americans during the incursions of Canadian Wildfire smoke whether the air was clean enough to go outside & exercise, or whether millions of Americans should stay inside their sealed homes. Near neighbors of indoor residential wood burners should not have to stay inside their sealed homes instead of in their yards, when neighboring wood burners are burning wood that emits PM2.5 above Ambient Air Quality Standard (NAAQS) of 35 micrograms per cubic meter. In 2024 25 micrograms per cubic meter? PurpleAir PM2.5 monitor data can be downloaded from PurpleAir Maps during normal government working hours, even if data is gathered overnight & on weekends, so governments could shut down polluting indoor residential wood burning, based on science.

Who shot J.R.'s chimney? It was a dark & stormy night & the near neighbor (N.N.) needed a PM2.5 monitor but didn't yet have one. Anyway, the wood stove was "certified" & N.N. had a camera. RAWSEP's Episode 56JR: A near neighbor in Washington State arranged a photo shoot, as suggested by the Department of Ecology. Can you tell the different opacities apart (with glasses? with cataracts? 19%? 21%?) Should the near neighbor act like a canary in a coalmine & just drop dead? See Residents Against Wood Smoke Emission Particulates Corporation, <https://rawsepresidents.wordpress.com> for news articles on Indoor Residential Wood burning smoke pollution & remedies. See RAWSEP Youtube videos at <https://www.youtube.com/@rawsepresidents4370> & RAWSEP podcasts on Spotify <https://open.spotify.com/show/32hfC477jEeeDbQoTsu82l> & Amazon Music Prime & <https://podcasts.google.com>, & more. Residents Against Wood Smoke Emission Particulates Corporation, a non-profit organization is writing a grant distributing PM2.5 monitors to any near neighbor who complains of wood smoke pollution (PM2.5) entering the near neighbor's yard, as well as distributing Heat Pumps that work at 40 degrees below zero Fahrenheit. The PM2.5 monitors are a superior method of detecting air pollution, compared to shooting photos of smoke opacity or relying on the EPA certification of wood stoves as "safe". The Office of the Inspector General (OIG), watchdog of the Environmental Protection Agency (EPA) stated in a report in February 2023 that the EPA certification of wood stoves was deeply "flawed" & many if not most wood stoves certified do not actually meet the standards of certification, emissions of 2 grams of PM2.5 per hour. Attorney Generals from 10 States are currently suing the EPA in order to have wood stove certification improved in 2023, but the EPA has indicated no changes may happen until 2027. Wood smoke is 90% PM2.5, particulates of 2.5 micrometer size, which are the perfect size to infiltrate the human lung, setting off a cascade of human health problems & early deaths. Wood burning emits more PM2.5 & CO2 than coal burning, even in properly certified US wood burning stoves & United Kingdom Ecodesign wood burning stoves. Wood burning emits 450 times the PM2.5 as a natural gas furnace. \$249 PurpleAir PM2.5 monitors are on US EPA AirNow Maps of smoke & Fire, alongside \$100,000 EPA PM2.5 monitors, correlated to EPA monitors with a simple mathematical formula. These monitor readings told millions of Americans during the incursions of Canadian Wildfire smoke whether the air was clean enough to go outside & exercise, or whether millions of Americans should stay inside their sealed homes. Near neighbors of indoor residential wood burners should not have to stay inside their sealed homes instead of in their yards, when neighboring wood burners are burning wood that emits PM2.5 above Ambient Air Quality Standard (NAAQS) of 35 micrograms per cubic meter. In 2024 25 micrograms per cubic meter? PurpleAir PM2.5 monitor data can be downloaded from PurpleAir Maps during normal government working hours, even if data is gathered overnight & on weekends, so governments could shut down polluting indoor residential wood burning, based on science.