

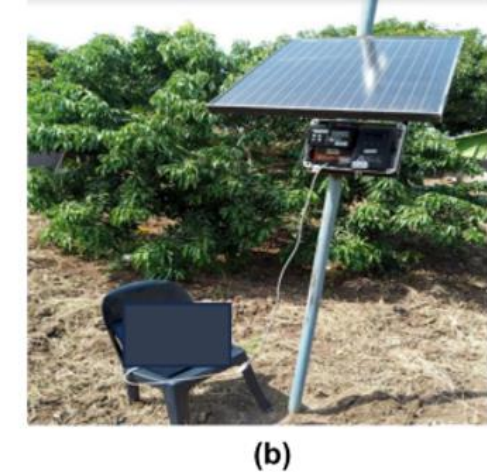
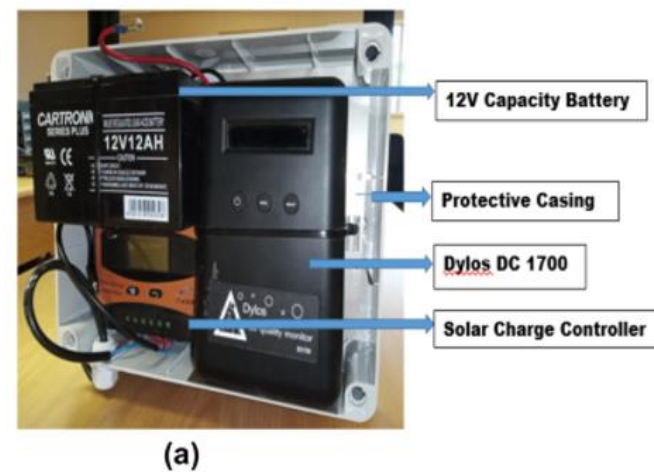
Minnesota, Minneapolis, Nenookaasi homeless camp. [Nenookaasi, Minneapolis' largest homeless camp, marked for closure to make way for development](#). Star Tribune. As winter fell on Camp Nenookaasi, a dozen yurts with articulated wooden frames rose up, each outfitted with a wood-burning stove. United Kingdom. English Councils. Tighter Wood Burner rules. [English councils have issued just three fines under tighter wood burner rules - The Guardian](#). English councils have issued just three fines under tighter wood burner rules. Data also shows only one prosecution and follow-ups on one-third of 10,000 complaints made since January 2022. December 18, 2023. **Excerpts edited by RAWSEP for brevity and clarity and relationship to Residents Against Wood Smoke Emission Particulates, a 501c3 nonprofit organization.** Particle pollution is associated with increased mortality from causes including cardiovascular and respiratory diseases, as well as lung cancer. Dirty air causes 26,000 to 38,000 early deaths a year in England, and wood smoke PM2.5 is linked to [dementia](#). Wood burning [has overtaken traffic](#) in the UK as one of the most harmful sources of the smallest particles, known as PM2.5. Emissions of PM2.5 from wood burning increased by 35% between 2010 and 2020, [the Times reported](#). Only about [8% of people in the UK](#) burn solid-fuels indoors, meaning a small minority are responsible for significant amounts of pollution. Two-thirds of these people live in urban areas, where the impact of air pollution is worst, and virtually all of them have other sources of heating. Research by the campaign group Mums for Lungs found 80 local authorities said they were not using the new powers, while 47 councils said the measures did not apply to them. In January, the government promised to introduce legislation after the publication of the [environmental improvement plan \(EIP\) 2023](#) that would cut the emissions limit of wood burning stoves from 5g smoke an hour to 3g. The government then weakened its message in August, when the [air quality strategy framework for local authority delivery](#) rowed back on the EIP language, suggesting ministers would “look to strengthen” the effect of smoke-control areas, and consult on potentially reducing the limit. The founder of Mums for Lungs, said: “The government claims to have ‘world leading’ legal provisions to address air pollution. People are suffocating, but being met with silence.” Despite more than 10,000 complaints about wood being burned in populated areas since January. Urban areas with high particulate pollution face restrictions on burning wood, to avoid more particulates spewing into the air.. [Merton Council supporting the first-ever Clean Air Night](#). Merton Council Newsroom. Merton's taking part in the London Wood Burning Project this winter to raise awareness of the harmful effects of wood burning. [Lancaster wood fuel specialists issue guide to what wood is safest to burn this winter](#). Lancaster Guardian. What can you burn? Its first piece of advice is for homeowners not to be afraid to light their wood burner on environmental grounds. As long as they In fact, burning this wood in a wood burner will generate fewer CO2 emissions than are produced when lighting a gas fire. What wood to choose to. United Kingdom, Wales. Flintshire. [House in Flintshire left 'uninhabitable' after fire - Wrexham Leader](#). smoke damage to a property in Flintshire at the weekend - rendering it "The cause of the fire was logs stored next to a wood burning stove. [House left 'uninhabitable' after fire breaks out while occupants are out - North Wales Live](#). United Kingdom, Wales. North Wales Live. Logs stored next to a wood burning stove caught fire and caused damage to the property. smoke damage to a property in Flintshire at the weekend. South Africa, Vhembe. Scientific Paper on PM2.5 from Biomass Burning in Brick Kilns in Thailand, gathering data using low cost sensors. [Quantification of ambient PM2.5 concentrations adjacent to informal brick kilns in the - Nature](#). Globally, exposure to ambient fine particulate matter (PM2.5) is a major health challenge due to its minute size and potential of penetrating through. Quantification of ambient PM2.5 concentrations adjacent to informal brick kilns in the Vhembe District using low-cost sensors. [Scientific Reports](#) volume 13, Article number: 22453 (2023) [Cite this article](#) Excerpts edited by RAWSEP for brevity and clarity and relationship to Residents Against Wood Smoke Emission Particulates, a 501c3 nonprofit organization. Abstract. The widespread exposure to ambient PM2.5 poses a substantial health risk globally, with a more pronounced impact on low- to medium-income nations. This study investigates the spatiotemporal distribution of PM2.5 in the communities hosting informal brickmaking industries in Vhembe District. Utilizing Dyllos DC1700, continuous monitoring of PM2.5 was conducted at nine stations adjacent to informal brick kilns from March 2021 to February 2022. The study determined the correction factor for PM2.5 measurements obtained from the Dyllos DC1700 when it was collocated with the GRIMM Environmental Dust Monitor 180. The study also evaluated the compliance of ambient PM2.5 concentrations across the stations with the South African National Ambient Air Quality Standard (NAAQS) limits. Annual PM2.5 concentrations for the stations ranged from 22.6 to 36.2 µgm-3. All monitoring stations reported the highest daily exceedance with respect to the daily NAAQS limit in the winter. Major PM2.5 sources included domestic biomass combustion. Well-calibrated low-cost sensors could be employed in suburb regions with scarce air quality data. Findings from the study could be used for developing mitigation strategies to reduce health risks associated with PM2.5 exposure in the area. Conclusion.PM2.5 is of great challenge to scientists all over the world due to its short- and long-term effects on human

The emission released by a bonfire into the atmosphere is in the form of a balloon...

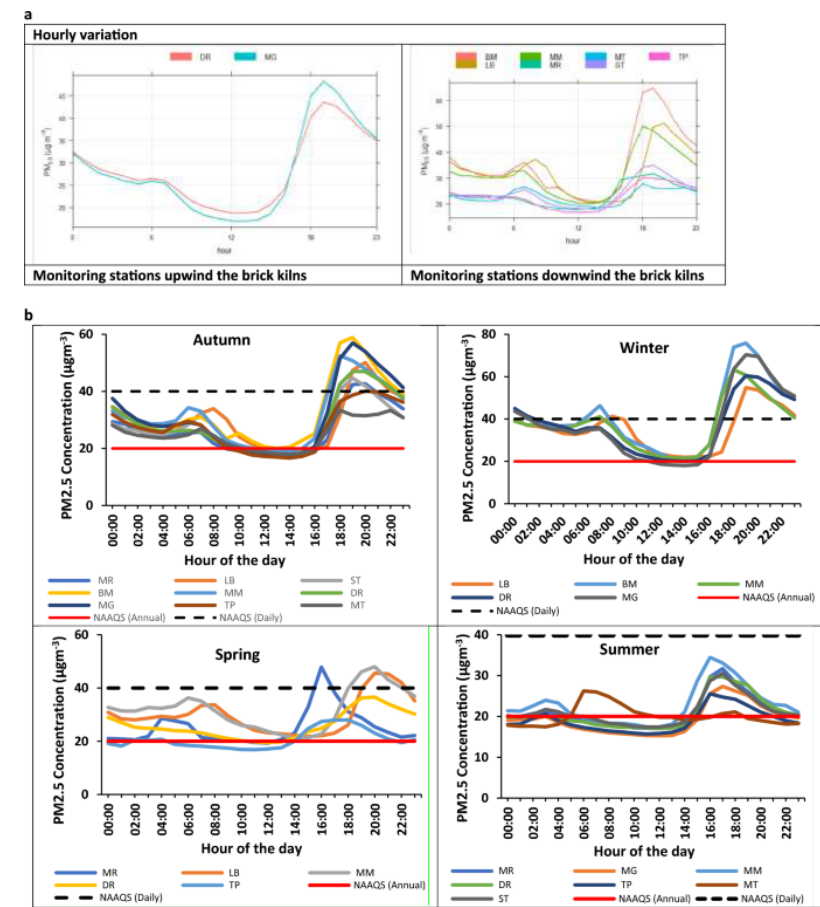
🌱 Next time you see black smoke on the side of the road, know that all of it goes to the air and from there to our lungs. As our forests are polluted, our air is also polluted. "Ashhi what to me?" Don't be indifferent by saying, "apply to the concerned authorities."



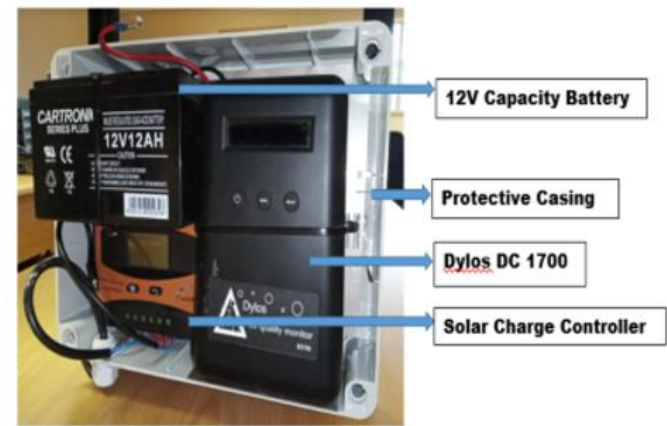
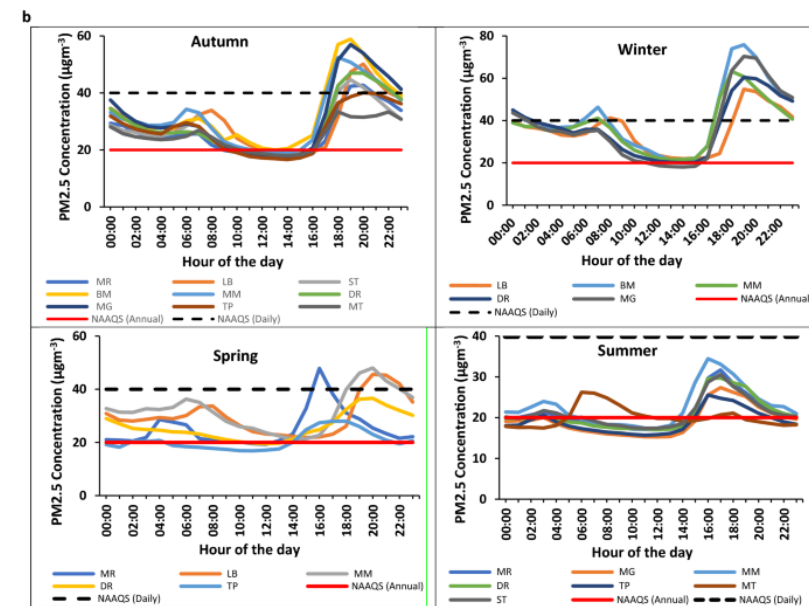
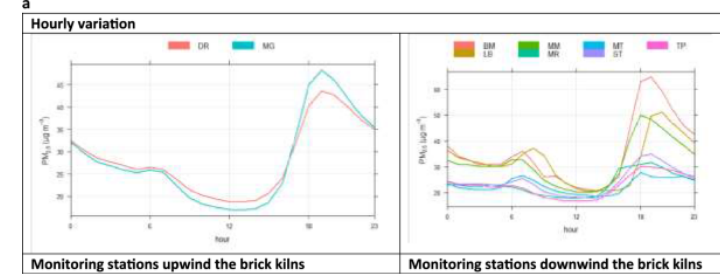
health. Monitoring of PM2.5 creates awareness to the public about air quality around them, helping them to take necessary precautions. The conventional method involving the use of federal reference or federal equivalent methods is the most acceptable method. However, not all regions of the world can afford it. To enhance the understanding of the air quality around the less privileged regions of the world, the use of network of well calibrated low-cost sensors is a necessity. For the first time in Africa, a correction factor for PM2.5 readings from Dylus DC1700 particulate matter sensor was generated. Additionally, the long-term applicability of Dylus for continuous monitoring of outdoor PM2.5 was assessed. Findings from the study have shown that all the PM2.5 monitoring stations were non-compliant with the annual NAAQS threshold limit of 20  $\mu\text{g}/\text{m}^3$  for PM2.5. However, about 50% of the PM2.5 concentrations at majority of the stations fell below the NAAQS annual threshold limit. Although, none of the monitoring stations exceeded the NAAQS thresholds in summer, highest PM2.5 concentrations and daily exceedances of the daily NAAQS limit were observed during winter across all the monitoring stations. The high PM2.5 level experienced especially in winter could be drastically reduced through interventions such as electrification, the provision of clean energy alternatives at subsidized rates, and public enlightenment. maximal impact on PM2.5 concentration was from brick kilns, monitoring stations showed. influx of PM2.5 were observed at wind speed  $> 5 \text{ ms}^{-1}$  at the southwest, signifying brick kilns as the potential PM2.5 source. there is high possibility of increased PM2.5 readings in areas very close to the brick kilns which were not included as monitoring stations. In conclusion, the application of Dylus DC1700 offers an excellent solution to bridging the data gap and establishing air pollution control policies for public health protection in areas with sparse air quality data. Similar content viewed by others. Article Open access 11 May 2021. [Residential wood stove use and indoor exposure to PM2.5 and its components in Northern New England](#) Article 28 June 2019. Article Open access 30 July 2019. Thailand. [Firefighters douse rice fields as Thai farmers burn crops to clear land - Longview News-Journal](#). Researchers found that smog - caused by high levels of harmful PM 2.5 particles in the air - is at its worst in the country when farmers illegally burn waste crops to cheaply clear their land between late October and April. They are pressured to meet the rising demand for food in the region - while keeping costs low to boost their profits. Academics have found that smoke is combined with stagnant atmospheric conditions during those months - with little wind or rain - causing the toxic pollutants to linger in the air. In March this year, the Public Health Ministry of Thailand reported that around 1.3 million people in the country were had been unwell due to the rising levels of air pollution. Officials said 200,000 residents were hospitalized in a single week. It came as researchers from Peking University in Beijing, China, also discovered that long-term exposure to particulate matter PM.25 air pollution is associated with an increased risk of lung cancer. earlier this month, Dr Krittai Thanasombatkul from Chiang Mai, Thailand, died of lung cancer. He had previously blamed PM2.5 microdust particles for his condition. Thai politicians have failed to tackle the problem, which came to prominence several years ago. However, a draft 'Clean Air Bill' has been introduced which would provide subsidies to encourage farmers to switch to environmentally friendly methods of crop clearing instead of burning. Thailand. [How to cope when PM 2.5 pollution takes hold - Nation Thailand](#). Air pollution from dust particles smaller than 2.5 microns or PM2.5 in cities like Bangkok and its environs is now at levels that affect the. World. Urban wood burning pollution. [Wood smoke in urban areas: A hidden health hazard - EHN - Environmental Health News](#) Full Coverage Excerpts edited by RAWSEP for brevity and clarity and relationship to Residents Against Wood Smoke Emission Particulates, a 501c3 nonprofit organization. An investigation of high levels of harmful air pollution from wood smoke in urban areas. Research shows significant health risks, including early deaths and increased cases of asthma, strokes, and lung cancer. Wood smoke in urban areas: A hidden health hazard [EHN Curators](#) December 18, 2023. Research shows significant health risks, including early deaths and increased cases of asthma, strokes, and lung cancer. Studies indicate that wood burning for heating contributes significantly to urban air pollution. "Exposure like this over long periods of time will aggravate the heart and lungs of anyone in the smoke plume." Wood burning, often perceived as a benign heating source, is emerging as a significant urban health hazard. How do you think this information might change your approach to home heating? Around the world, [nearly three billion people rely on solid fuels \(primarily wood, dung, crop residues, and charcoal\) to meet cooking and heating needs](#). United States. [Pipeline expansion outpaces US safety agency's capacity - Environmental Health News](#). Studies indicate that wood burning for heating contributes significantly to urban air pollution, posing a major health risk. Headlines. Arizona. [Why is the air in Phoenix so dirty during the holiday season? Here's what to know - AZCentral](#)



The monitoring equipment (a) Modified air monitoring device. (b) Installed air monitoring device connected to a laptop. [Full size image](#)



When temperatures cool across the Phoenix area, more people start burning their wood fireplaces, pits and start setting off fireworks, which result in. Arizona, Phoenix. [Why is the air in Phoenix so dirty during the holiday season? Here's what to know - AZCentral](#). When temperatures cool across the Phoenix area, more people start burning their wood fireplaces, pits and start setting off fireworks, which result in. California, Fresno & Madeira. [Fresno, Madera Counties under no burn status due to poor air quality - ABC30](#). Gonzalez adds, you'll want to check when and if you're able to burn a wood fire at your home. "There are consequences. Not only are there health Oftentimes it contributes to PM-2.5, impacting public health. Which again it seems to trigger asthma, emphysema, and other air-breathing conditions. California, Idyllwild-Pine Cove. [Smell Smoke Near Idyllwild, Pine Cove? Here's Why | Temecula, CA Patch](#) According to officials, the Stone Creek Hazardous Fuel Reduction project involves burning through wood and debris piles to enhance fire. California, San Francisco. [Beginning of week in Bay Area to be most affected by projected rains - CBS San Francisco](#). Spare the Air alert extends ban on wood burning through weekend 1st winter Spare the Air alert of season issued for Friday; wood burning banned. California, Saratoga. ['Stubborn' fire at Saratoga condo complex destroys 1 unit, damages 2 others - CBS News](#). Vegetation fires burn along I-280 and Hwy 17 in San Jose, heavily impacting traffic · Spare the Air alert extends ban on wood burning through weekend. Louisiana, New Orleans. [A New Orleans neighborhood confronts the racist legacy of a toxic stretch of highway](#) Iowa Public Radio. particulate matter 2.5, or PM 2.5. Amy Stelly, an artist, urban designer and community activist, stands beneath the Claiborne. / Drew Hawkins/Gulf. Minnesota, Hibbing. [Hibbing Renewable Energy Center to recycle ash tree wood waste | Local - Mesabi Tribune](#) The utility's Hibbing Renewable Energy Center biomass boiler will begin burning wood chips from trees impacted by the Emerald Ash Borer. Oregon, Bend. [Stagnant air, cloudy skies tomorrow - KTVZ](#) State air quality agencies recommend avoiding outdoor burning, and residential wood burning should be minimized as much as possible. A high. Texas, Dallas. [Dallas-Fort Worth's worsening air quality - Axios](#). Cumulative fine particle pollution exposure in the Dallas-Fort Worth metro area. Micrograms per cubic meter of PM 2.5 exposure; June 1 to Sept. 30. Washington, Mountlake Terrace. [Outdoor workers gain year-round protections from dangerous wildfire smoke | MLTnews.com](#) Current PM 2.5. Now Cast AQI for PM 2.5. Required Protections. 20.5-35.4 µg/m3. 69 or higher. · Wildfire smoke response plan. · Wildfire smoke safety. Brazil, Sao Paulo. [São Paulo Air Pollution Surpasses Guidelines Amid Pandemic | Mirage News](#) A study characterized fine particulate matter, known as PM2.5 because it consists of particles with a diameter of less than 2.5 micrometers. Independently of such extreme events, air quality in the southern hemisphere's largest city falls far below the standards set by CETESB, São Paulo state's environmental agency, let alone the recommendations of the World Health Organization (WHO), which are more rigorous, United Kingdom. [Volunteers in UK inhale exhaust, cleaning products to study effects on the brain](#) New York Post. Researchers create four different kinds of pollutants: diesel exhaust, wood smoke, cleaning products and cooking fumes. Europe. Moldova. [Moldovan school fights for survival – DW – 12/16/2023](#) DW Piles of wood Many households in rural Moldova rely on burning wood for heat Image: waiting to be burned. Employees from the. India – IndiaTimes. PM 2.5 by 159 tonnes and cutting CO2 emissions by 4.8 million tonnes. Effective use of these funds requires increased efforts from state and India, Ballabgarb. [Ballabgarh records worst AQI in state - Tribune India](#) While the PM 2.5 level (particulate matter of 2.5 micrograms that hangs in one cubic square metres) in Ballabgarh was 368 in the morning, it India, Delhi. [Delhi AQI recorded at 330 - The Statesman](#) The PM 2.5 micro particles are small enough to penetrate deep into the respiratory tract and likely trigger health issues, as experts say. The air. India, Delhi. [Delhi AQI now in poor category at 331 - The Statesman](#) The PM 2.5 micro particles are those pollutants that are small enough to penetrate deep into the respiratory tract and likely trigger health issues. India, Delhi. [Delhi records min temp of 6.5 deg C, air quality remains 'very poor' - SakshiPost](#) On Sunday morning, the air quality at Anand Vihar entered the 'severe' category with PM 2.5 at 408 and PM 10 at 396, in the 'very poor' category. India, Delhi. [Delhi records min temp of 6.5 deg C, air quality remains 'very poor' - Daijiworld](#) 2.5 at 436 and PM 10 at 349, in the 'very poor' category, while the NO2 was at 129, in the 'moderate' level. The PM 2.5 at Okhla Phase-II was. India, Delhi. [Delhi Air Pollution Part 2: Composition, Causes, Legal Interventions, and Remedial Measures](#) The Times of India. Dehradun. [What's polluting the hill town of Dehradun? These photos hold the answer - Citizen Matters](#) Graph showing concentration of PM2.5 and PM10 in the city's air over the years Over the last six years, concentrations of PM 2.5 and 10 have. India, Karachi. [Karachi experiences chilly, windy weather - Geo.tv](#) People warm their hands by burning wood fire during the winter season in Lahores Old Anarkali "Fog combines with particulate matter to form smog," .PM2.5 and Dementia. [Air pollution linked to increased risk of stroke and dementia transition, study reveals](#). News Medical. Study methodology. In the present study, researchers first calculated the air pollution score using levels of pollutants: PM2.5, PM2.5-10. PM2.5 & roving sentinel. [Scientists Have Discovered New Air Pollution Sources Using "Roving Sentinels"](#) SciTechDaily. PM2.5 source. They then applied the model to analyze a previously unknown area of elevated PM2.5, located in an industrial area just south.



(a) Modified air monitoring device. (b) Installed air monitoring device connected to a laptop. [Full size image](#)