

Episode 56RP March 9, 2024. Vote on the best anti wood smoke posters. It's our Oscars!

Vote for Best Poster and more, our own Oscars!

Vote at <https://rawsepresidents.com/episode-56rq-vote-for-best-poster-and-more-our-own-oscars/>

Vote for 12 categories of nominees.

1)Nominees for Best Documentary Poster of Human Response to Actual Pollution from Indoor Residential Wood Burning

2)Nominees for Best non-Actress in a Poster

3)Nominees for Best non-Actor in a Poster

4)Nominees for Best scary neighborhood Poster

5) Nominees for Best Reference to another movie.

6)Nominees for Best use of animal non-actors in a poster.

7)Nominees for Best short slogan on a poster

8)Nominees for Best drawn cartoon on a poster.

9)Nominees for Best cartoon of an indoor residential wood stove, wood burning fireplace or outdoor wood burning, depicting the emissions as toxic to humans.

10)Nominees for Best Use of a Historical Period in a poster.

11)Nominees for when Posters got it wrong.

12)Nominees for Best Poster which also mentioned an international event.

1) Nominees for Best Documentary Poster of actual Human response to, or human observation of the PM2.5 Pollution from Indoor Residential Wood Burning, or other wood burning

1a) One human's reflexive flinching and squinting while hunching over a leaf fire.

1b) Humans catching PM2.5 emissions from a wood fire in a huge plastic bag.

1c) One ordinary near neighbor's photos of emissions from indoor residential wood burner's stack reaching the near neighbor's yard and sickening them.



2) Nominees for Best non-Actress in a Poster

2a) Pregnant women in a mask.

2b) Young woman in braids and a mask, with a poster saying If You Don't Kill Pollution, It Will Kill You.

2c) Young woman in a mantilla and holding a fan, on the Day of the Dead.



3) Nominees for Best non-actor showing actual human response to, or human observation of the PM2.5 Pollution from Indoor Residential Wood Burning, or other wood burning

3a) One man's reflexive flinching and squinting while hunching over a leaf fire (two nominations so far this year!).

3b) One man striding through the streets of New York City during the incursion of Canadian Wildfire Smoke in June 2023.



4) Nominees for Best scary neighborhood Poster

4a) Wood burners, it's scary what they're doing to public health.

4b) Making the invisible visible.

4c) Wildfire smoke continues through Monday AM with photo of an actual smoke filled cityscape

4d) The wood burning menace image used again, this time threatening a child shoveling snow outside his home.



- 5) Nominees for Best Reference to another movie.
- 5a) Reference to the Nutty Professor.
- 5b) Reference to the Wizard of Oz.
- 5c) Reference to Cocaine Bear.

Cheri Lewis & Jeri Lewis tackle Indoor Residential Wood Smoke Pollution in 2023

Lambchop my love, don't you like wood-smoky air? Doesn't it remind you of something?



It reminds me that my Cheri might become Patient Zero for Antibiotic Resistance to bacterial infections which follow pandemic viral infections!

I'm just a "nutty" Professor but do you see what that wood smoke pollution did to me (and my doppelganger)?



I'm not sure if being Patient Zero for Antibiotic Resistance made you into a suave playboy or reinforced your nerdiness, but either way, as a scientist, you should know that wood burning emits more CO2 and PM2.5 than coal burning!



Review of a "Cocaine Bear" & "Wood Stove Guy in a Bear Suit" Double Feature. Residents Against Wood Smoke Emission Particulates
<https://rawsepresidents.wordpress.com> RAWSEPresidents
<https://youtu.be/WhiGatExVwg?si=Op87nfNCLGiiJBGF>

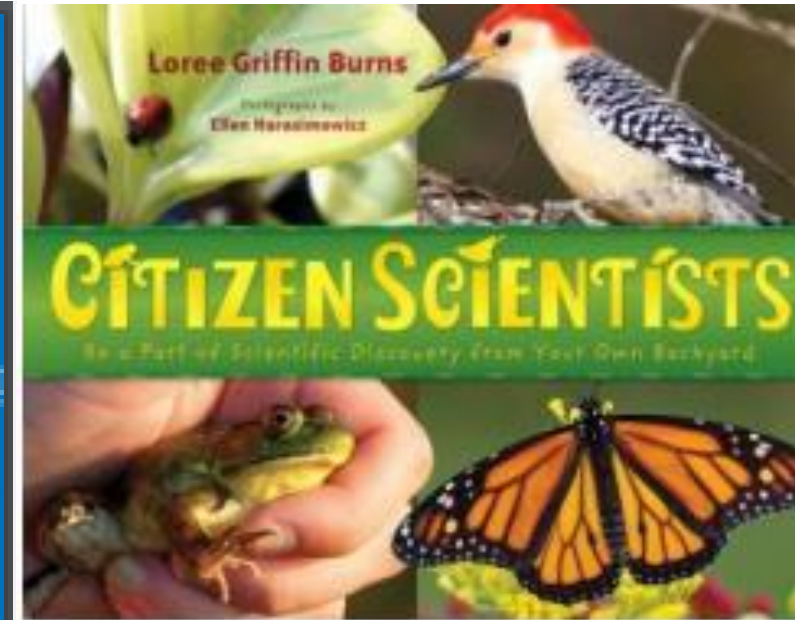
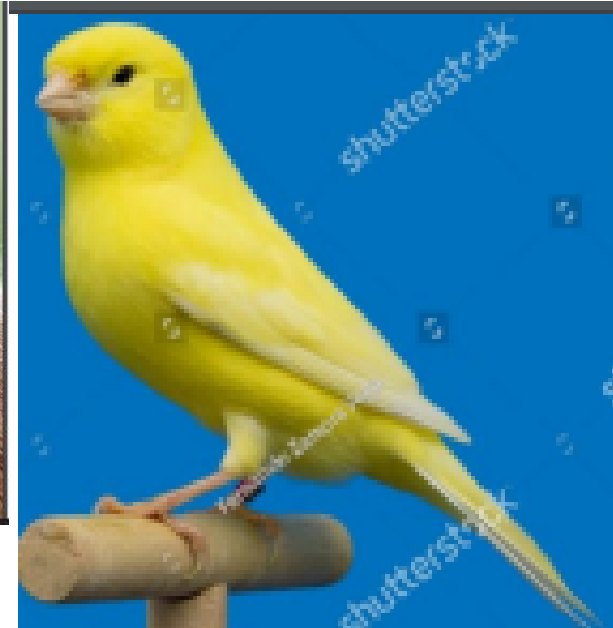


6) Nominees for Best use of animal non-actors in a poster.

6a) Squirrel

6b) Canary (in a coal mine).

6c) Woodpecker, Frog and Butterfly on a Citizen Scientists book cover.



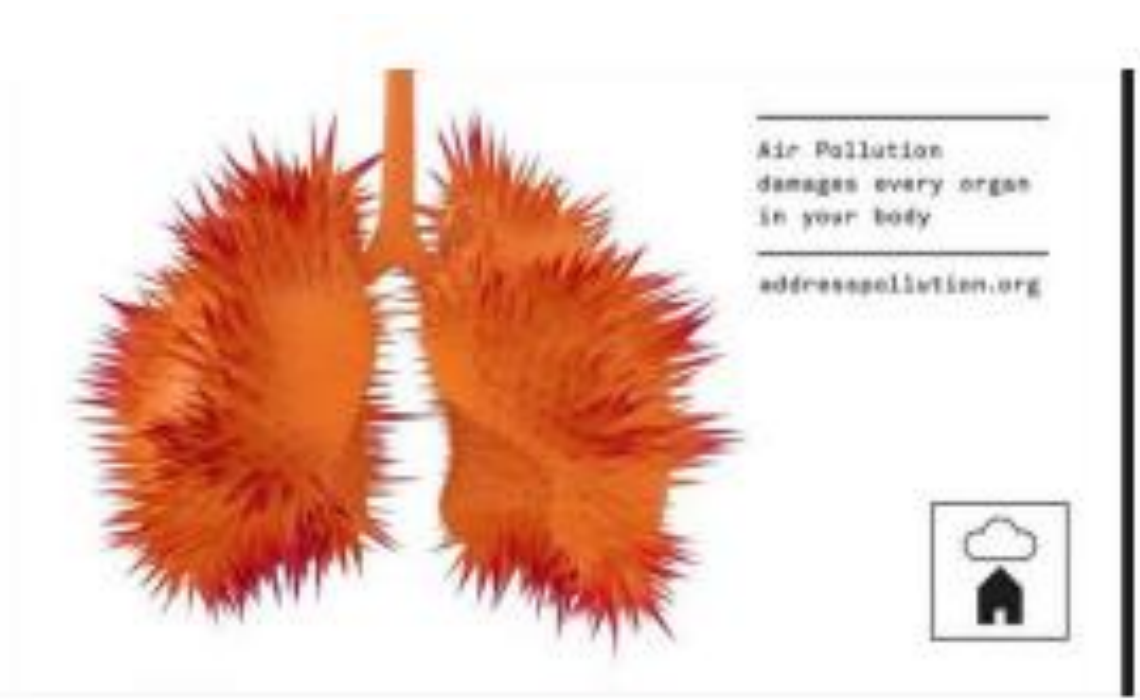
7) Nominees for Best short slogan on a poster

7a) Skip the fire, love your lungs.

7b) It's about to become easier to make the switch from wood heater to electric heating.

7c) Air pollution damages every organ of your body (with picture of lung tissue turned to wood slivers).

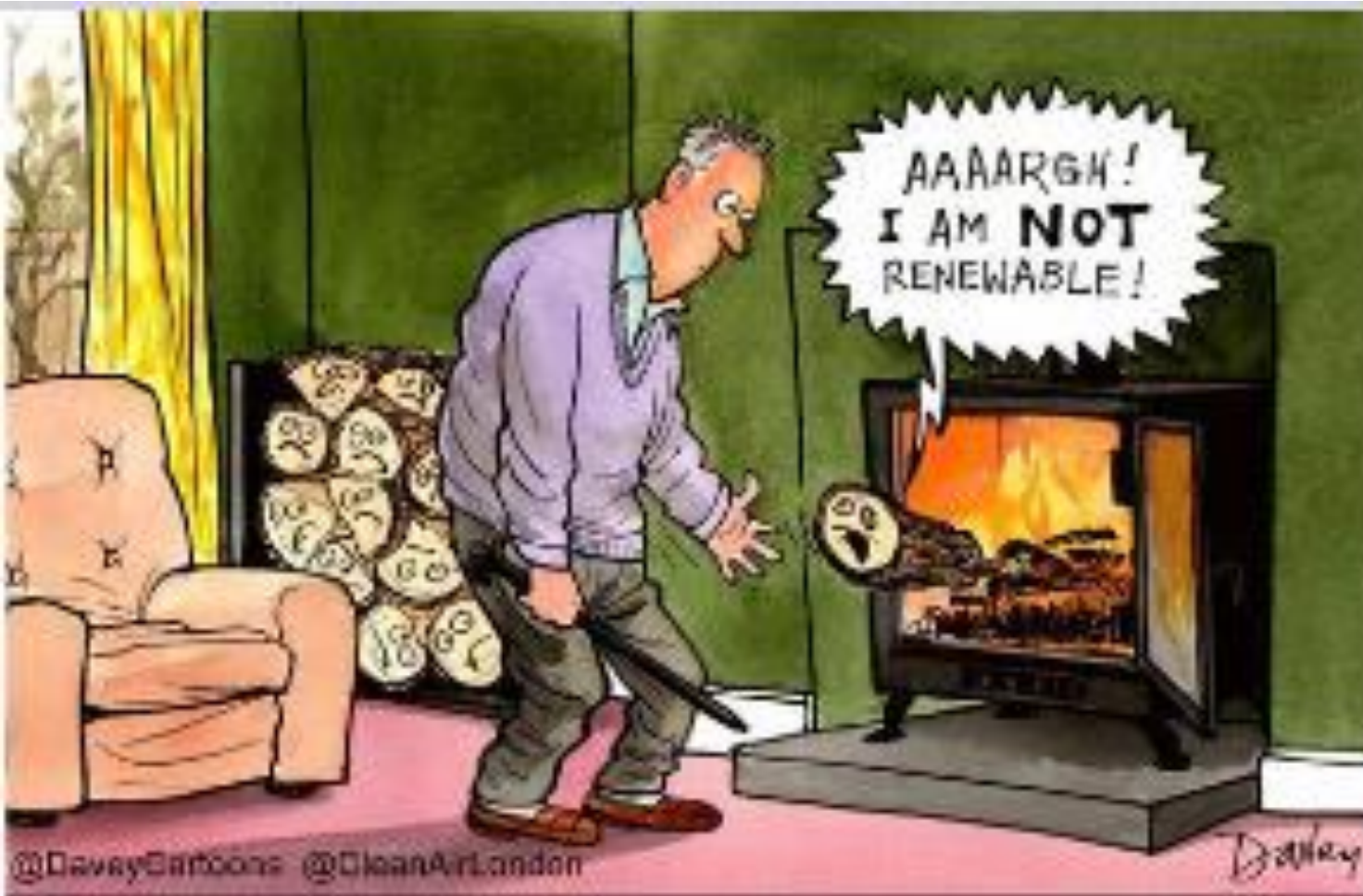
7d) Are your neighbors passive smokers? Please don't light the stove!



8) Nominees for Best drawn cartoon on a poster.

8a) A man puts a log on an indoor residential wood fire, and the log shrieks, Argh! I am not renewable!

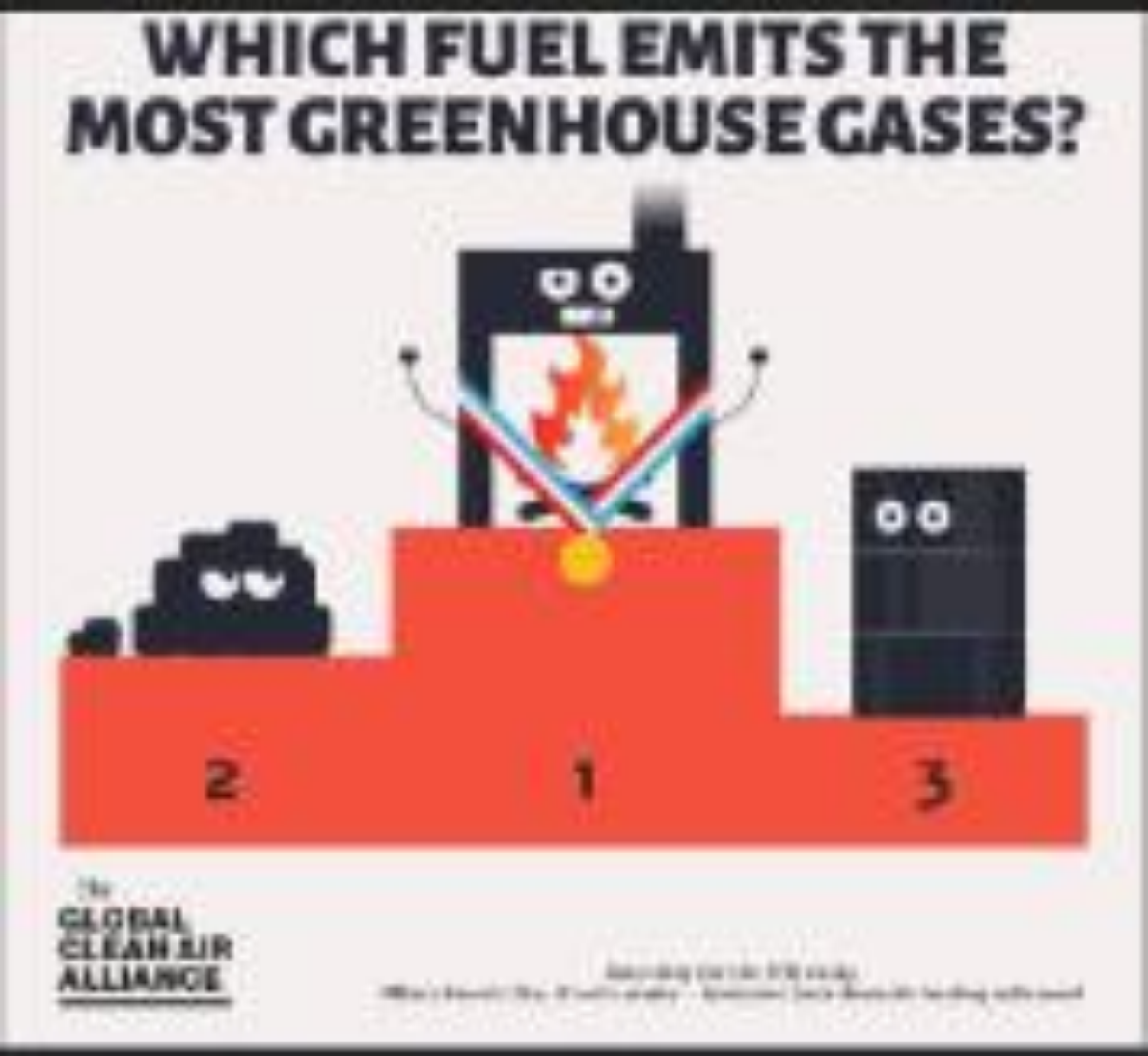
8b) A couple is walking with their child outside a house emitting clouds of indoor residential wood smoke and they are sputtering and coughing.



9) Nominees for Best cartoon of an indoor residential wood stove, wood burning fireplace or outdoor wood burning, depicting the emissions as toxic to humans.

9a) Which fuel emits the most greenhouse gases? Cartoon showing coal, wood burning and natural gas burning. Wood burning is number one! (in emitting the most greenhouse gases!)

9b) Photo of buddies, oblivious to the pollution, around an outdoor wood fire, with a big thumbs down hovering over them.



10) Nominees for Best Use of a Historical Period in a poster.

10a) Reuse of a 1909 Suffragette poster.

10b) Reuse of a 1930s Depression era photograph as well as a 1985 photograph of a coal miner replacing a canary with an

10c) Reuse of a photo of the 1960s Dating Game TV stage set.

10d) Reuse of a map of Military Burn Pits in the Mideast circa the first two decades of the 2000s.



Residents Against Indoor Residential Wood Burning

In 1988 the U.S. EPA began certifying indoor residential wood stoves as "safe" and the government has been subsidizing purchases of these vectors of human caused PM2.5 emissions from the solid fuel wood burning for the past 35 years. Wood burning emits more PM2.5 & CO2 than fossil fuel coal burning. Stop the modern "Dust Bowl" for near neighbors.

In 1986, a photo of A Canary in a Coal Mine. In British Mines from 1911 to 1986, in 1986 replaced by a Carbon Monoxide monitor. Today we have PM2.5 monitors to protect near neighbors of indoor residential wood burners from PM2.5. Replace woodburning with Heat Pumps.



Use wind, solar, & geothermal to power a Heat Pump that works to 40 degrees below zero Fahrenheit in 2023, on a smart electric grid extending to all rural areas. RAWSEPresidents is writing a grant to provide these to near neighbors and former wood burners who give up their stoves.



Military Burn Pit Map
PurpleAir PM2.5 Monitors Map
Indoor Residential Wood Burning.

While on active duty, military service members may have been exposed to a variety of airborne hazards including: The smoke and fumes from open burn pits

Residents Against Indoor Residential Wood Burning

In 1988 the U.S. EPA began certifying indoor residential wood stoves as "safe" and the government has been subsidizing purchases of these vectors of human caused PM2.5 emissions from the solid fuel wood burning for the past 35 years. Wood burning emits more PM2.5 & CO2 than fossil fuel coal burning. Stop the modern "Dust Bowl" for near neighbors.

In 1986, a photo of A Canary in a Coal Mine. In British Mines from 1911 to 1986, in 1986 replaced by a Carbon Monoxide monitor. Today we have PM2.5 monitors to protect near neighbors of indoor residential wood burners from PM2.5. Replace woodburning with Heat Pumps.



Use wind, solar, & geothermal to power a Heat Pump that works to 40 degrees below zero Fahrenheit in 2023, on a smart electric grid extending to all rural areas. RAWSEPresidents is writing a grant to provide these to near neighbors and former wood burners who give up their stoves.



11) Nominees for when Posters got it wrong.

11a) A government poster's suggestion that near neighbors should gauge the opacity of wood smoke before complaining. It's not easy and it's not fun to attempt to do that. Use a PurpleAir PM2.5 monitor instead.

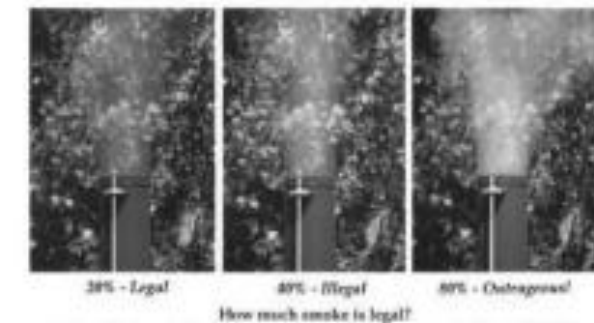
11b) A poster showing the health effects of wildfire smoke, but not also mentioning that indoor residential wood burning emissions produces those same harmful health effects.

Who shot J.R.'s chimney?

(it was a dark and stormy night, & the near neighbor (N.N.) needed a PM2.5 monitor, but didn't yet have one. Anyway, the wood stove was "certified" & N.N. had a camera)

RAWSEP's Episode 56JR: A near neighbor in Washington State arranged a photo shoot, as suggested by the Department of Ecology

Can you tell the different opacities apart (with glasses? with cataracts? 19%? 21%?) Should the near neighbor act like a canary in a coalmine & just drop dead?



In Washington it's legal to have smoke blowing at more than 20% opacity for more than 24 hours in an hour. Washington State Department of Ecology



WILDFIRE POLLUTION HARMS HEALTH

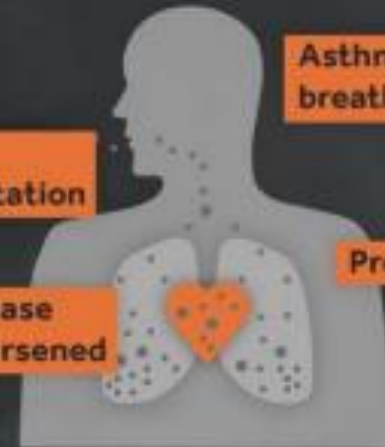
Fine particle (PM_{2.5}) effects

Eye, lung, throat irritation

Heart disease effects worsened

Asthma attacks, breathing problems

Premature death



CLIMATE CENTRAL

12) Nominees for Best Poster which also mentioned an international event.

12a) PM2.5 pollution from stubble field burning in India compared to indoor residential wood burning in the United States, and suggesting rather than spending on a pricy wedding reception, they should rather buy a PurpleAir PM2.5 monitor.

12b) Aggression by Hamas at a Peace Festival in Israel compared to aggression from indoor residential wood burning, polluting the air of near neighbors and sickening them, in a formerly peaceful residential neighborhood.

12c) The stages of grief. An airplane losing a door exposing passengers to potentially being sucked out the door, compared to near Neighbors leaving door or window open and being exposed to an indoor residential wood burner's air pollution.

Stubble Burning in Pakistan & India sickened thousands of people, & closed schools for days. The solution is below. 😊

The PM2.5 pollution from India & Pakistan farmer's field stubble burning is similar to PM2.5 from indoor residential wood burning and from San Joaquin Valley field waste burning (all biomass PM2.5)

Suspend a PurpleAir PM2.5 monitor from your eaves, instead of mistletoe.



Be a citizen scientist collecting pollution data to use to shut down wood burning for good, and the good of your community, instead of spending on a pricy wedding reception. Or do both!
Cut down on air pollution instead.
Email rawsepresidents@gmail.com and request a RAWSEP XL Template to calculate 3day % above NAAQS* 12, 25 & 35 ug/m3.
Present the % exceedance data to your local Health Department. Pass local ordinances to make this the standard way to measure air pollution from indoor residential wood burning, rather than the failed certification of Indoor Residential Wood Stoves which has resulted, according to the Office of the Inspector General with most or all wood stoves certified being highly polluting with PM2.5 & PM2.5 is 2.5 micrometer particulates, the perfect size to infiltrate the human lung, setting off a cascade of human health problems and early deaths. Wood burning emits more PM2.5 & CO2 than coal burning. *National Ambient Air Quality Standards.

A Human Shield hospital, a near neighbor hostage to wood smoke. RAWSEPresidents view.

The Israeli Peace Festival interrupted by terrorists. A peaceful neighborhood inundated with indoor residential wood smoke.



A hospital used as a place to kill hostages.

A peaceful neighborhood used as a place to spew life-denying pollution.

Israeli army says footage shows foreign hostages inside Gaza's al-Shifa hospital

IFF releases CCTV it says is from day of Hamas attacks, and separately claims an Israeli soldier was killed inside hospital
Israel-Hamas war: live updates



A near neighbor of an indoor residential wood burner's

STAGES OF GRIEF

DENIAL

ANGER

Coughing SOUND

COLD DRAFT

OH CRAP, THE WINDOW!

Turn on the air Purifier or **SOMETHING!**

AHHHHHHHH!

Brought to you by the Academy of Residents Against Wood Smoke Emission Particulates, a 501c3 nonprofit organization, dedicated to handing out PurpleAir PM2.5 monitors to any near neighbor who complains of indoor residential wood smoke entering the near neighbor's yard and sickening the near neighbor.

Check of RAWSEPresidents' website <https://rawsepresidents.com> 825+ Youtube videos at <https://www.youtube.com/@rawsepresidents4370/videos> and Podcasts at Spotify <https://open.spotify.com/show/32hfC477jEeeDbQoTsu82l> and Amazon Music Prime Podcasts <https://www.amazon.com/music/prime> free if you have an Amazon Prime subscription.

