

In Episode 57DES 1 Trump Cuts that adversely affect human health of average Americans 2 Your Friendly Neighbor Epidemiologist tells you to a get a Measles Vaccine if you have not already! Main Content

1 Trump Cuts that adversely affect human health of average Americans Substack Letters from an American **RAWSEP View** Of concern are Measles outbreaks in Texas New Mexico and Kentucky The FDA cancelled a meeting to select the strains of Flu included in next seasons Vaccines **RAWSEP View** The Trump cuts are being applied to Bird Flu surveillance and research and other impacts are being felt in many areas The most troubling cuts to many are cuts that affect human health and cuts planned for Social Security The top 10 list of news covered in this Substack article **1 Measles cases rise 2 The Flu Vaccine for next year normally scheduled to be available in Fall 2025 is imperiled 3 Bird Flu cuts 4 Environmental Protection Agency EPA cuts which could include cuts to air quality monitoring which is a concern of Residents Against Wood Smoke Emission Particulates 5 Constituent protests at Republican Town Halls 6 Threatened Social Security cuts 7 Tariffs on Canada and Mexico to start March 4 2025 8 Cuts to Research at Universities is affecting hiring 9 Good News Legal challenges to Trump cuts have been planned since 2024 by 23 Democratic state attorney generals 10 The Bad News example of DOGE cutting Ebola research DOGE cannot easily reverse this error Excerpts edited by RAWSEP for brevity and clarity and relationship to Residents Against Wood Smoke Emission Particulates a 501c3 nonprofit organization** Heather Cox Richardson February 27 2025 **1 Measles cases rise** Yesterday an unvaccinated child in Texas died of measles as nearly 140 people in Texas and New Mexico have been reported ill with the disease This is the United States first measles death since 2015 Measles cases appear almost every year but usually the government works to suppress measles as well as other contagious diseases It is not clear the Trump administration intends to do that **2 The Flu Vaccine for next year normally scheduled to be available in Fall 2025 is imperiled** Yesterday the Food and Drug Administration FDA abruptly canceled a scheduled meeting to select the strains of flu to be included in next seasons vaccines **3 Bird Flu Cuts** from the Department of Government Efficiency DOGE have made it hard for the country to confront the bird flu that is sweeping the poultry industry and now infecting dairy herds as well Trump is trying to rehire government employees who were working on combating Bird Flu after widespread cuts to employees in the Agriculture Department during the first purge of government workers gutted research on it Now some of the employees in the Animal and Plant Health Inspection Service the National Animal Health Laboratory Network program and so on have been offered their jobs back but those offers are haphazard and not all employees are keen to take jobs that are clearly not secure Indeed Trump is cutting programs on which Americans depend **4 Environmental Protection Agency EPA cuts which could include cuts to air quality monitoring which is a concern of Residents Against Wood Smoke Emission Particulates** Yesterday at a Cabinet meeting Trump indicated that the next major round of workforce cuts will be at the Environmental Protection Agency EPA created by Congress in 1970 to protect clean air land and water Trump said that 65% of the 15000 people who work there will be fired an official later clarified that the president meant that the budget would be cut by 65% Today three former heads of the EPA warned in a New York Times op ed that Americans would miss the agency when it is gone William K Reilly and Christine Todd Whitman who headed the EPA under Republican presidents and Gina McCarthy who headed it under a Democratic president recalled how between 1970 and 2019 the EPA cut emissions of common air pollutants by 77 percent The EPA minimizes exposure to dangerous air during wildfires



Youtube QR

Spotify QR

Website QR

MEASLES
is highly contagious and spreads through the air when an infected person coughs or sneezes.

It is so contagious that if one person has it, **9 out of 10 people** of all ages around him or her will also become infected if they are not protected.

vaxopedia.org

Two Doses of MMR is the Best Protection Against Measles

before 1957 everyone had measles (check titer to be sure)	1963-1967 first measles vaccine (it didn't work)
1971 one dose of MMR routinely given	1990 - 2nd MMR dose added to schedule
Have you had two doses of MMR?	Get vaccinated before traveling!

Stay safe out there, everyone. I'll keep you updated. And to all of my friends in NM and west Texas, hang in there!

delivering health benefits that outweigh its costs by 30 to 1 [5 Constituent protests at Republican Town Halls](#) Trump administration officials claim they are enacting the policies their voters demand but the blowback on Republican representatives willing to hold town halls during the House recess was so intense that House leaders are urging them simply to stop holding constituent events If they want to continue to do so leaders suggest making sure they vet attendees to make sure there will not be altercations that go viral on social media Trump announced cuts of 800 workers at the National Oceanic and Atmospheric Administration NOAA which monitors climate change and provides weather and ocean reports Further cuts tomorrow could bring the total to 1000 [6 Threatened Social Security cuts](#) Also in the DOGE crosshairs is Social Security Today the administration announced a major organizational restructuring of the Social Security Administration This restructuring appears to mean large cuts to the agency even though staffing is already at a 50 year low It is not clear exactly how many positions will be cut multiple outlets say half of the 57000 employees of the Social Security Administration will be let go while an executive at the agency stated that the initial number of firings will be 7000 At least five of the eight regional commissioners whose offices oversee and support Social Security frontline offices across the country are leaving and former Social Security administrator Martin O Malley warned Social Security is being driven to a total system collapse [7 Tariffs on Canada and Mexico to start March 4 2025](#) Trump said today that the 25% tariffs on products from Mexico and Canada will take effect on March 4 2025 An additional 10% tariff on goods from China will also go into effect that day Tariffs are expected to drive up prices Economists warn that the mass firings and the Trump tariff threats are having a chilling effect on the economy Consumer confidence is dropping dramatically [8 Cuts to Research at Universities is affecting hiring](#) When Stanford University is implementing a freeze on staff hiring in the university [9 Good News Legal challenges to Trump cuts have been planned since 2024 by 23 Democratic state attorney generals](#) 23 Democratic state attorneys general have been working together to stop the Trump unconstitutional actions Under the urging of then attorney general Bob Ferguson of Washington state in February 2024 they began to prepare for cases based on the Trump campaign statements taking them seriously as potential policies and on Project 2025 which they recognized would play a big part in a second Trump administration They worked together to figure out the most effective strategies for challenging the administration in court As Trump issued executive orders at breakneck speed in his first few days in office they were ready to respond Today US District Judge William Alsup ordered the administration specifically the Office of Personnel Management to rescind the mass firing of government workers with probationary status ruling that the firings were probably illegal [10 The Bad News example of DOGE cutting Ebola research DOGE cannot easily reverse this error](#) Health does not seem to be a top priority of the administration At the Cabinet meeting yesterday billionaire Elon Musk admitted that DOGE had made some initial mistakes such as when it accidentally canceled very briefly efforts to contain an outbreak of Ebola in Uganda But Musk reassured his audience that mistaken decisions were quickly reversed DOGE restored the Ebola prevention immediately and there was no interruption Except they did not in theory USAID workers could get a waiver to continue work but in reality money did not resume and much of the work was forced to stop

2 Substack From the Friendly Neighbor Epidemiologist [RAWSEP View](#) Perhaps we will have to rely on our own resources of posting by epidemiologists for public health bulletins rather than a Trump United States Government We relied on the government in the past Here is a doctor an epidemiologists with accurate and helpful advice for dealing with measles and the most important advice she gives is to get the MMR



Youtube QR



Spotify QR



Website QR

MEASLES SYMPTOMS TIMELINE

Measles isn't just a little rash, it can be very dangerous



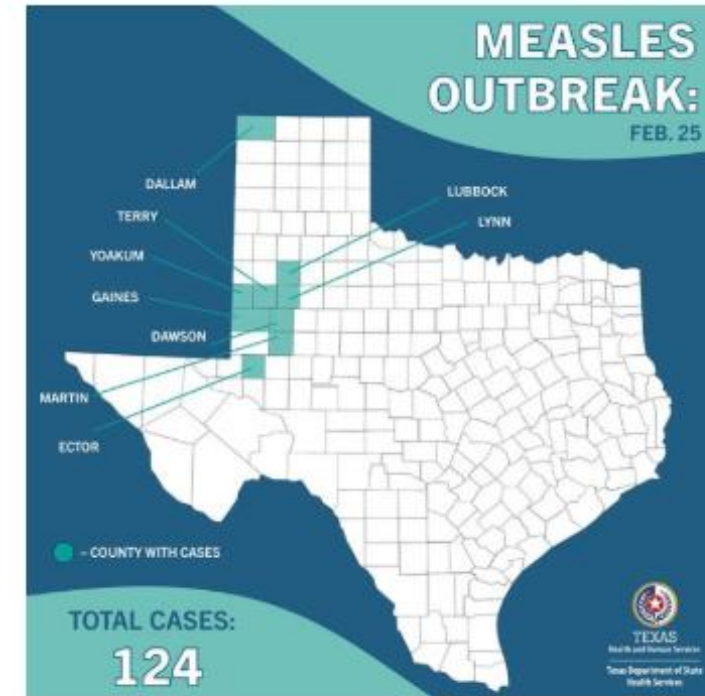
Measles Mumps and Rubella vaccine! She also reexplains that vaccines do not cause autism **Excerpts edited by RAWSEP for brevity and clarity and relationship to Residents Against Wood Smoke Emission Particulates a 501c3 nonprofit organization** Doctor Emily Smith February 27 2025 Measles updates Should you get a booster? How can you protect yourself? A child who died from measles in Texas It is just so sad and preventable Measles is Highly Contagious Infographic Measles Rubeola CDC 9 out of 10 people will become infected with measles if exposed and not protected through vaccines making measles one of the most infectious diseases in the world Measles can survive for 2 hours in the air or on infected surfaces like doorknobs light switches tables et cetera and spreads when an infected person breathes coughs or sneezes An infected person can transmit measles to others from 4 days prior to the rash starts Once infected it usually takes 10 14 days to become symptomatic At the beginning 4 7 days symptoms include a running nose cough eye irritation thick red and watery and white spots inside your cheeks The characteristic rash begins 7 18 days after exposure spreading from the face and upper neck first and then to the hands and feet Measles infects the respiratory tract and then spreads throughout the body It can cause severe disease complications and even death Some of those complications can happen years after infections 1 in 5 will need hospital care Complications include blindness brain swelling/damage pneumonia or other breathing problems severe diarrhea leading to dehydration and infections 30% of children infected with measles develop a complication For pregnant women measles can be super dangerous to her and the baby There is no specific treatment for measles Head to toe how highly infectious measles can ravage the body with fatal complications Is the measles vaccine MMR safe? Measles is also preventable with childhood vaccinations and the vaccine is safe A recent study with 657461 children one of the largest ever on the MMR vaccine for context the debunked Wakefield study I mentioned above had only 12 children looked specifically at the connection between the MMR vaccine and autism The conclusion MMR does not cause autism The real data with hundreds of thousands of children show that MMR vaccines are safe and effective against measles How can I protect myself and my family? Should I get a booster? For children There is still time and your child has a 90% chance of getting measles if they are unvaccinated and exposed Your child needs 2 doses but even 1 dose can provide good protection 93% protection! In high risk areas children as young as 6 months can be vaccinated too If your child gets the MMR vaccine within 72 hours of exposure it can provide some protection! For adults If you are an adult and wondering if you should get the MMR vaccine here is a helpful website You can ask your healthcare provider for a blood test to determine if you should get a MMR Specifically this is called a titer and is a simple blood test If you were born prior to 1957 you probably were exposed to measles as a child and have natural immunity If that is the case you do not need a booster or vaccination But you can still check if you have protection through the blood test the titer by asking your doctor If you were vaccinated between 1963 and 1967 that vaccine did not work So you might still be at risk if you did not receive your 2nd dose The 2nd dose was added to the vaccination schedule for children in 1990 If you were vaccinated between 1968 and 1989 you probably received only 1 dose 1 dose is still really protective 93 to 95% protective! You can ask your doctor for the blood titer test to see if you have enough protection through antibodies or if you need another dose So if you were born between 1957 and 1968 I would highly recommend checking your vaccination status by asking your doctor for a blood test titer to check for antibodies If you do not know your vaccination status or if you want to know if you need a booster ask your doctor for a blood test to check for antibodies When Do You Get the Measles Vaccine? VAXOPEDIA



Youtube QR

Spotify QR

Website QR



Measles Outbreak – Feb. 25, 2025 | Texas DSHS